

Site access changes at Springfield

Between Monday 2 November 2020 and June 2021, construction will take place on sections of Springfield Drive between Storey Building and Newton Building. To support safety management on-site new access routes will be established with diversions and clear signposting in place.

As these works progress, the Trust Estate Modernisation Programme (EMP) Team is also liaising with staff and our community partners to help manage and minimise disruption wherever possible.

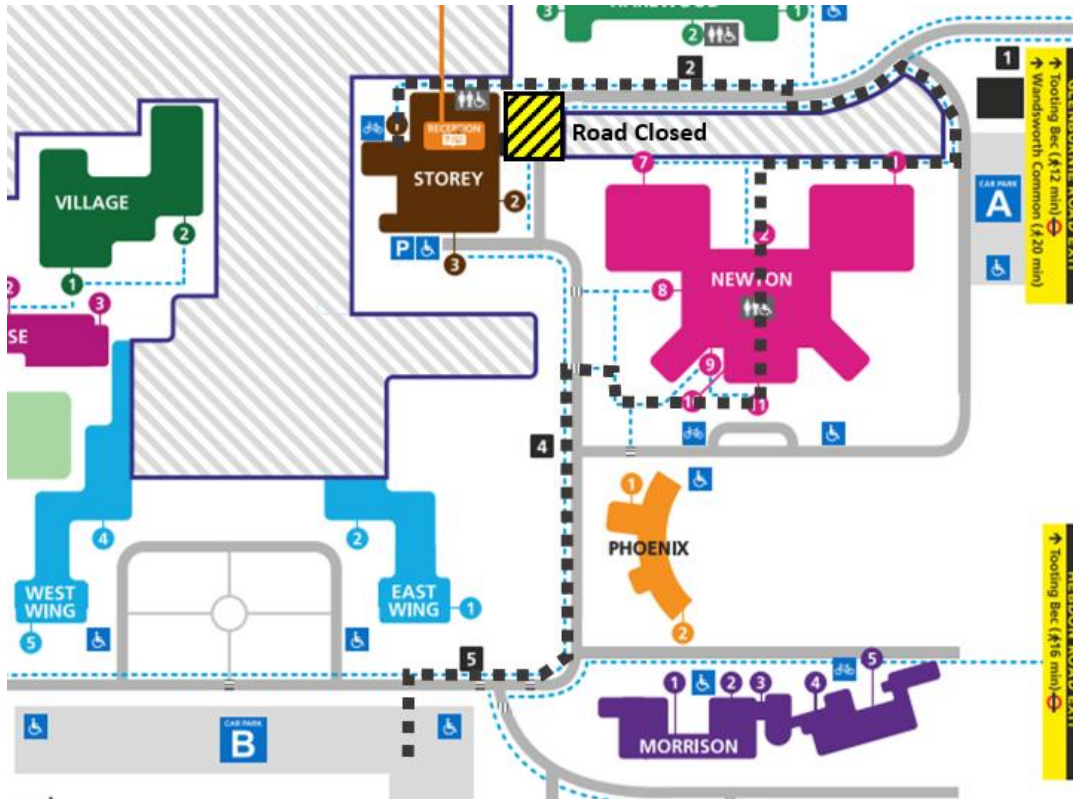
The works taking place will mean that:

- Access routes will be disrupted and there will be additional noise on site
- Car Park A will be closed to support health and safety management. Car Park B will remain open as usual
- New pedestrian and vehicular routes will be in place and diversions will be clearly signposted:
 - Pedestrian access will be through the Newton building
 - Vehicle access will be diverted around Newton with appropriate traffic management in place from the Glenburnie Road entrance
- There will be no vehicular access to Storey Building's underground car park but emergency ambulance access to Storey building will be maintained throughout

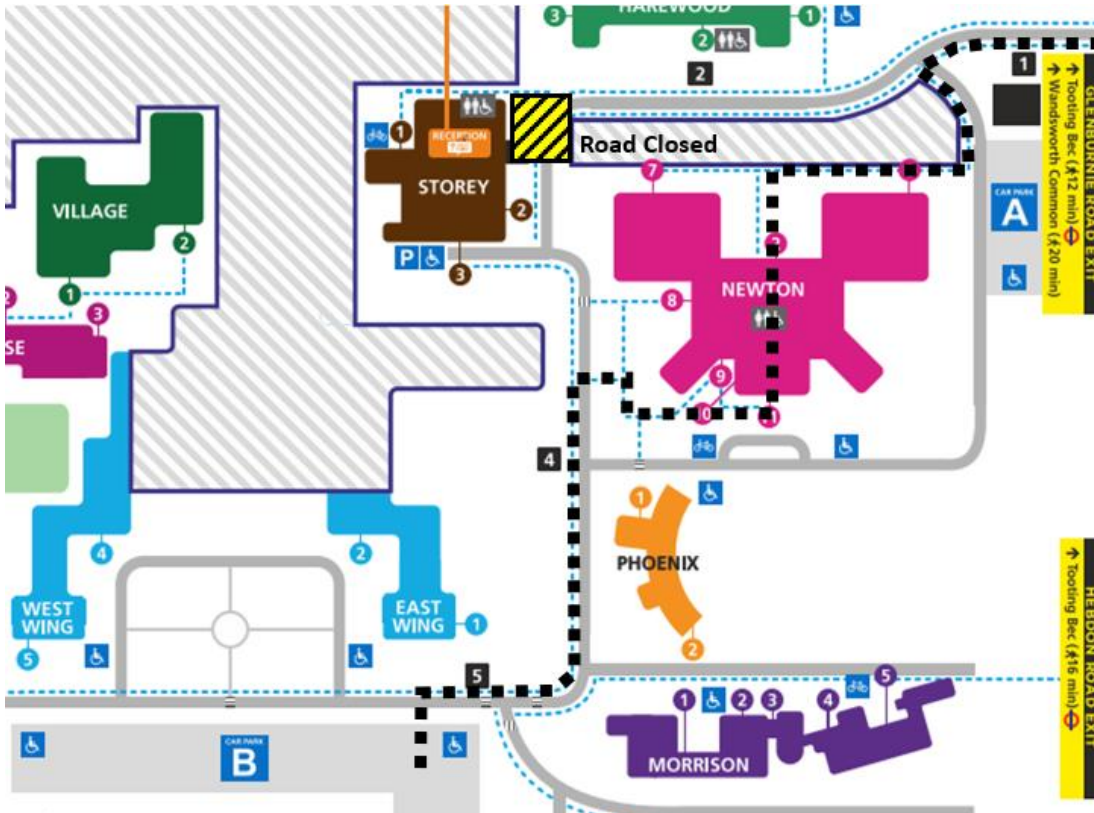
Please find below a series of maps showing the new access routes, all of which will be clearly signposted.

For any questions please email estatemodernisation@swlstg.nhs.uk

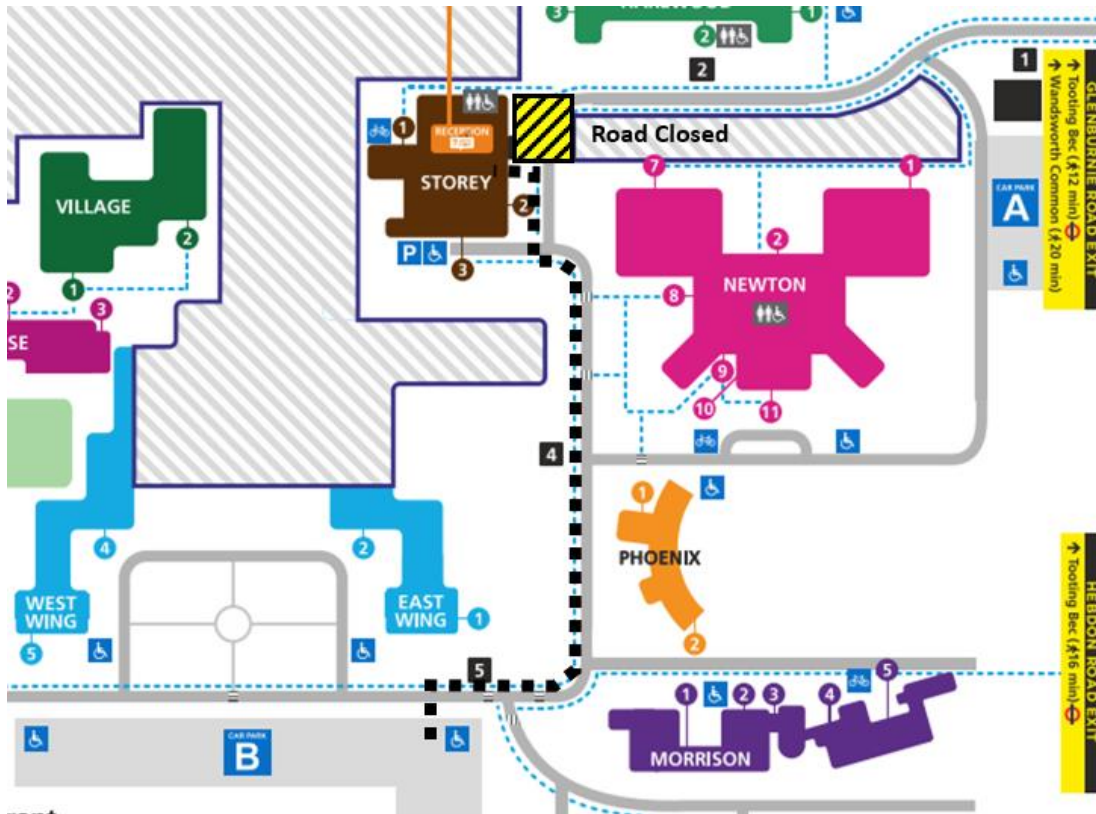
1. Pedestrian Walk To/From Car Park B To/From Storey Main Entrance



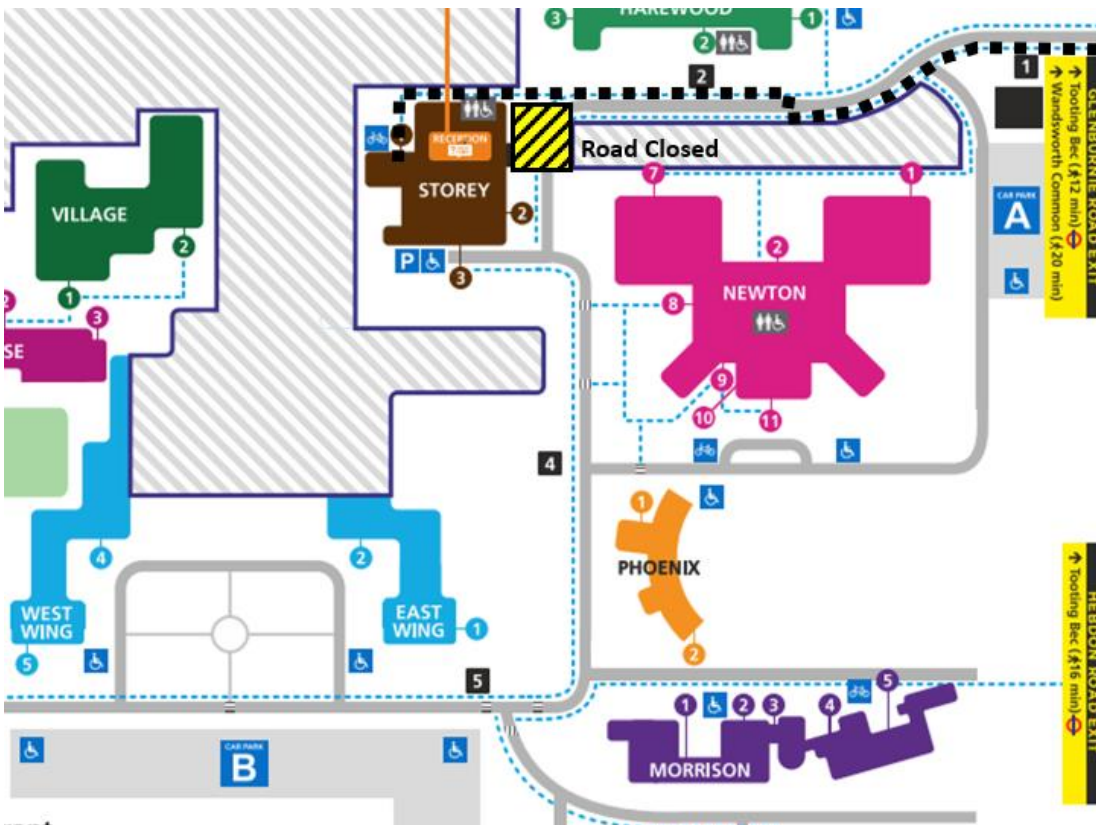
2. Pedestrian Walk To/From Car Park B To/From Glenburnie Rd



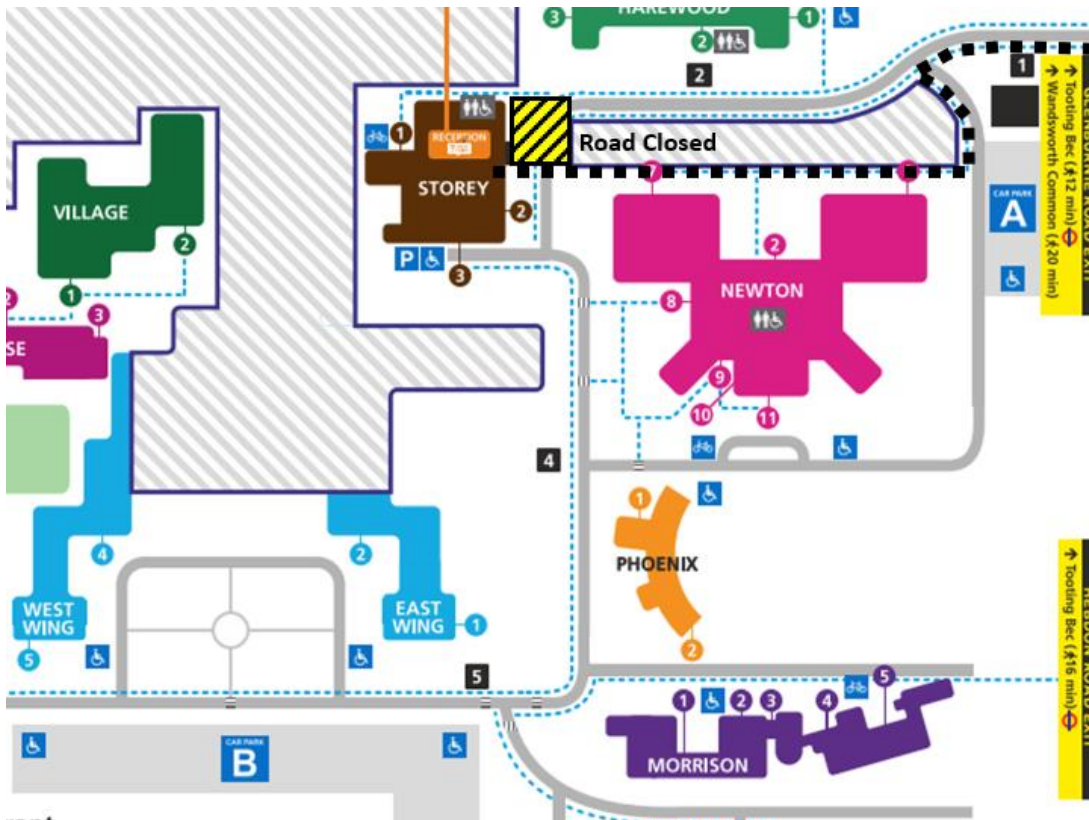
3. Pedestrian Walk To/From Car Park B To/From 136 Ward



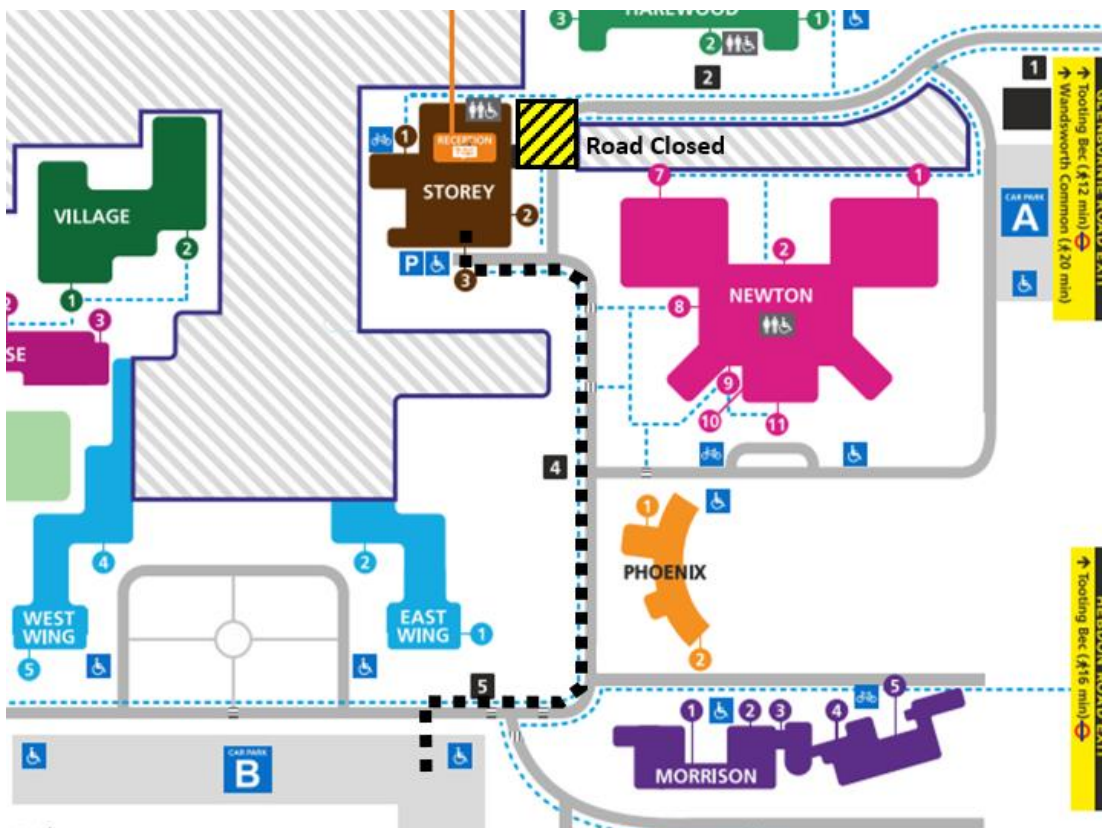
4. Pedestrian Walk To/From Glenburnie Rd To/From Storey Main Entrance



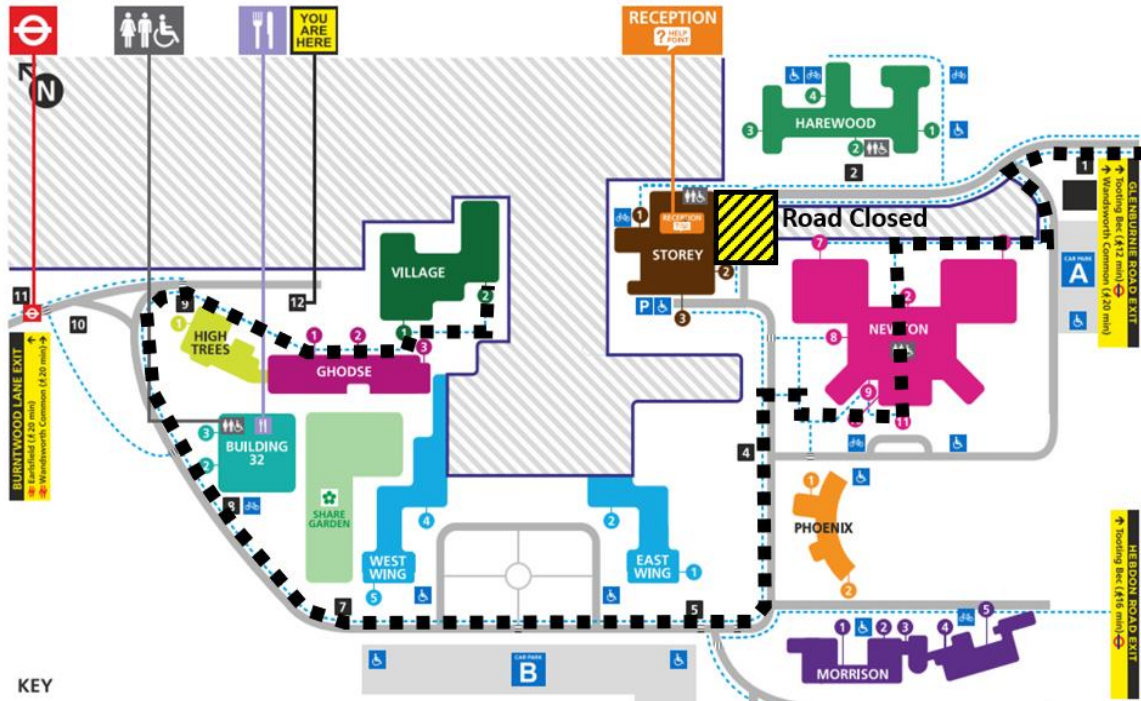
5. Pedestrian Walk To/From Glenburnie Rd To/From 136
Ward



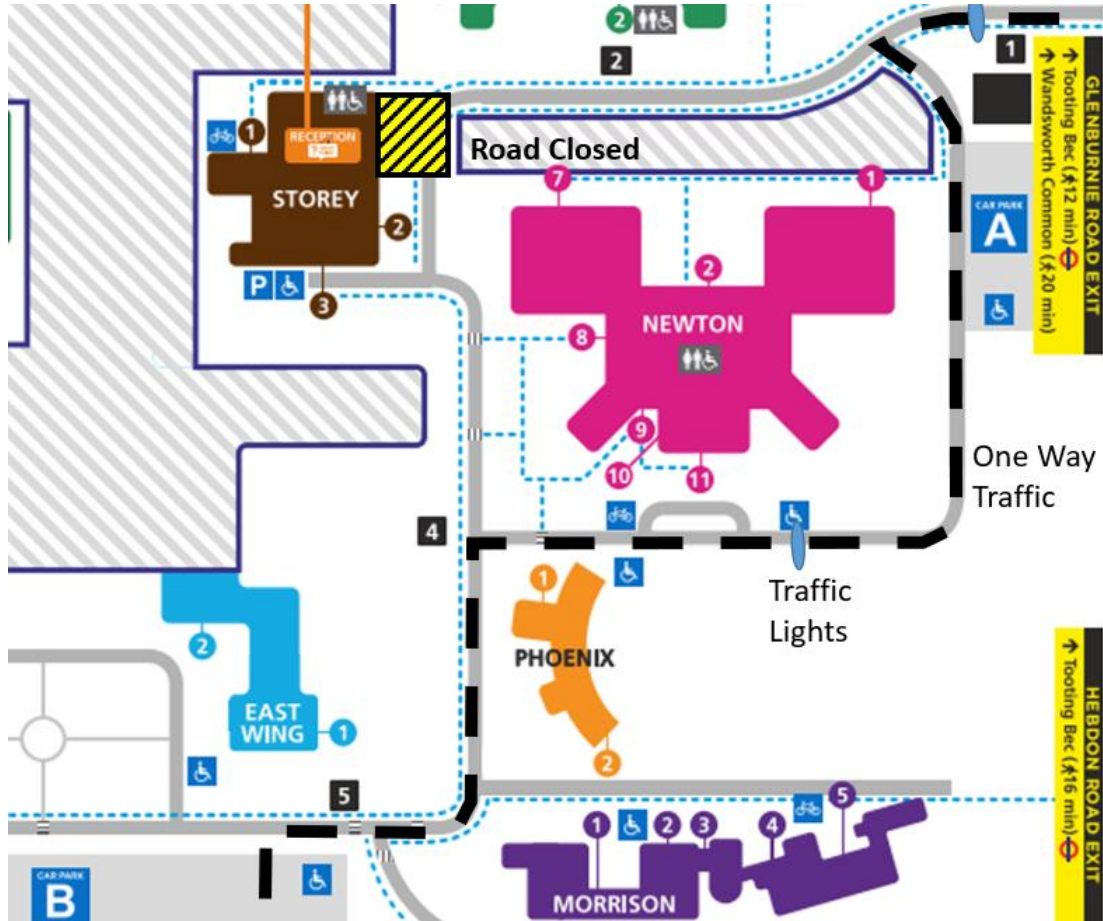
6. Pedestrian Walk To/From Car Park B To/From Storey



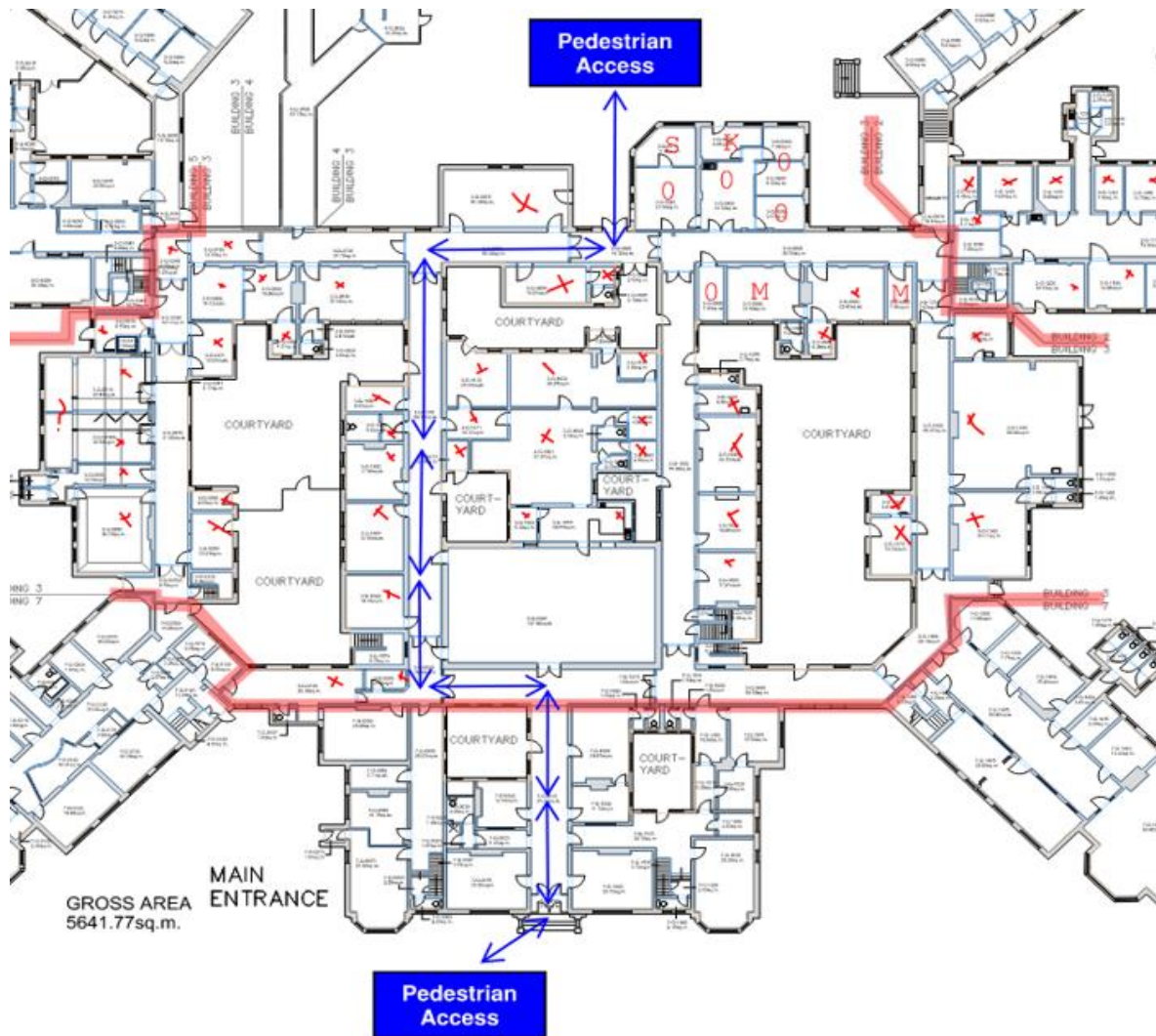
7. Pedestrian Walk To/From Glenburnie Rd To/From Gym/Nursery



8. Traffic Movement To/From Car Park B To/From Glenburnie Rd (+ traffic lights)



9. Elizabeth Newton Pedestrian Thoroughfare



###